

RLSS POOLE LIFEGUARD
SAFEGUARDING POLICY STATEMENT



The purpose and scope of this policy statement

RLSS Poole Lifeguard is committed to safeguarding and promoting the welfare of children and adults at risk and expects everyone involved in RLSS Poole Lifeguard activity to share this commitment.

Safeguarding is everyone's responsibility. It is everyone's responsibility to be proactive in promoting good practice and creating a supportive environment. It is also everyone's responsibility to pass on any concerns in relation to questionable conduct.

The purpose of this policy statement is:

- to protect children and young people of RLSS Poole Lifeguard from harm. This includes the children of adults who use our services.
- to promote health and welfare.
- to help everybody to take part in activities in a safe environment and supportive environment.
- to promote individuals to be the best they can be.
- to provide trainers and volunteers, as well as children and young people and their families, with the overarching principles that guide our approach to child protection. This policy applies to anyone working on behalf of RLSS Poole Lifeguard, including club trainers, executive members, trustees, volunteers and sessional workers.

Legal framework

This policy has been drawn up on the basis of legislation, policy and guidance that seeks to protect children in England. A summary of the key legislation is available from:

nspcc.org.uk/learning

Supporting documents

This policy statement should be read alongside our organisational policies, procedures, guidance and other related documents.

<https://www.rlss.org.uk/Handlers/Download.ashx?IDMF=e1ad1a4a-33be-46c1-bbf9-90ee89260475>

- Organisational responsibilities
- Safer recruitment
- Promoting good practice
- Awareness of increased risk of abuse
- Abuse and poor practice
- Responding to allegations of abuse and poor practice
- Case management
- Confidentiality, recording and sharing information
- RLSS UK guidance
- Safeguarding complaints procedure
- RLSS UK activity guide -England, Wales and the Channel Islands

We believe that:

- Children and young people should never experience abuse of any kind
- We have a responsibility to promote the welfare of all children and young people, to keep them safe and to practise in a way that protects them.

We recognise that:

- the welfare of children is paramount in all the work we do and in all the decisions we take all children, regardless of age, disability, gender reassignment, race, religion or belief, sex, or sexual orientation have an equal right to protection from all types of harm or abuse
- some children are additionally vulnerable because of the impact of previous experiences, their level of dependency, communication needs or other issues
- working in partnership with children, young people, their parents, carers and other agencies is essential in promoting young people's welfare.

We will seek to keep children and young people safe by:

- valuing, listening to and respecting them
- appointing a nominated child protection lead for children and young people, a deputy and a lead trustee/board member for safeguarding
- adopting child protection and safeguarding best practice through our policies, procedures and code of conduct for trainers and volunteers
- developing and implementing an effective online safety policy and related procedures
- providing effective management for staff and volunteers through supervision, support, training and quality assurance measures so that all trainers and volunteers know about and follow our policies, procedures and behaviour codes confidently and competently
- recruiting and selecting staff and volunteers safely, ensuring all necessary checks are made
- recording, storing and using information professionally and securely, in line with data protection legislation and guidance
- sharing information about safeguarding and good practice with children and their families via leaflets, posters, group work and one-to-one discussions
- making sure that children, young people and their families know where to go for help if they have a concern
- using our safeguarding and child protection procedures to share concerns and relevant information with agencies who need to know, and involving children, young people, parents, families and carers appropriately
- using our procedures to manage any allegations against trainers and volunteers appropriately
- creating and maintaining an anti-bullying environment and ensuring that we have a policy and procedure to help us deal effectively with any bullying that does arise
- ensuring that we have effective complaints and whistleblowing measures in place
- ensuring that we provide a safe physical environment for our children, young people, staff and volunteers, by applying health and safety measures in accordance with the law and regulatory guidance
- building a safeguarding culture where trainers and volunteers, children, young people and their families, treat each other with respect and are comfortable about sharing concerns.

Contact details

Nominated safeguarding lead

Name: Louise Harrison

Phone/email: safeguarding@rlss-poole.org.uk

Deputy safeguarding lead

Name: Julie Marshall

Phone/email: hon.sec@rlss-poole.org.uk

Trustee/Senior lead for safeguarding and child protection

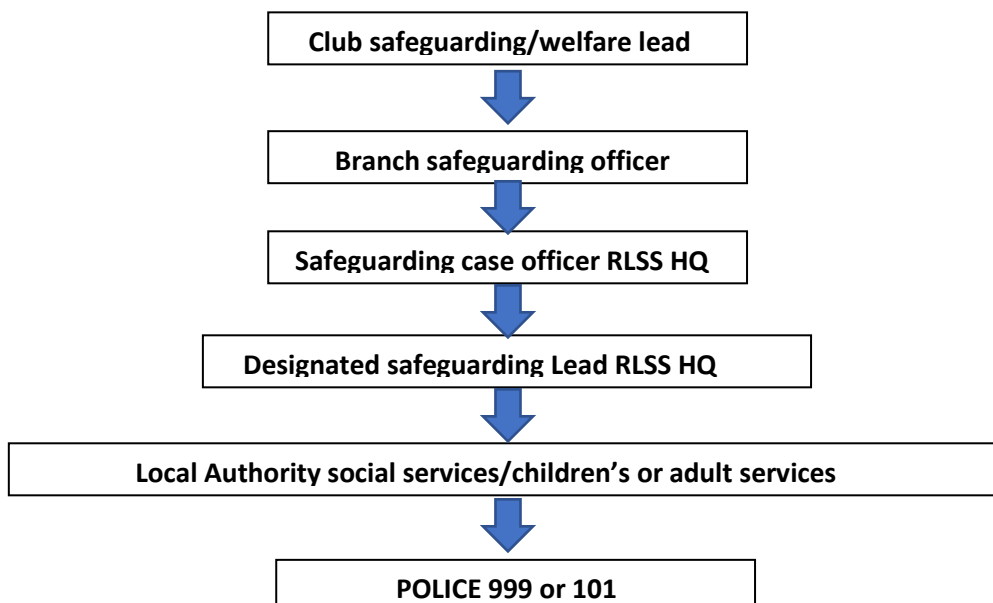
Name: David Ayres

Phone/email: president@rlss-poole.org.uk

NSPCC Helpline 0808 800 5000

Childline 0800 1111

How to report abuse



We are committed to reviewing our policy and good practice annually.